



Wireless tilting sensor for the detection of small parts containers

RF RW-NET

Material number: on request

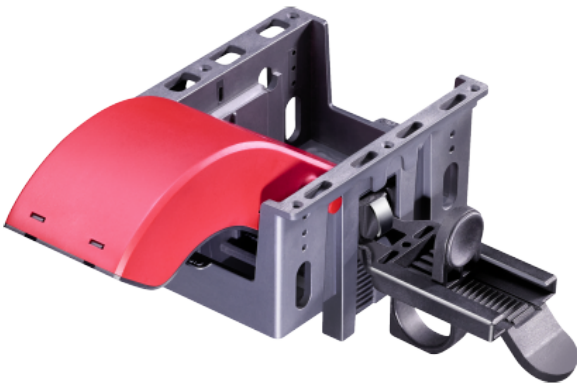
Features/Options:

- Sensor with sWave.NET® wireless technology for the detection of small parts containers
- Simple assembly in commercially available standard shelves
- All-purpose holder for different types of roller conveyors, e.g. item, CREFORM, Rollex etc.
- Transmission signal configuration

Notes

- The wireless tilting sensor and the assembling kit must be ordered individually. The assembling kit is not included with the wireless tilting sensor.

Product image



Technical data

Applied standards	EN 60947-5-1; EN 61000-6-2, -6-3, EN 61000-4-2, -4-20; EN 301 489-1; EN 301 489-3; EN 300 220-1; EN 300 220-2
Enclosure	PC-ABS / red, similar to RAL 3003 / UL 94 HB
Cover	PC-ABS / grey, similar to RAL 7015 / UL 94 HB
Bracket	PC-ABS / grey, similar to RAL 7015
Tensioning clips	POM black
Degree of pollution	2
Degree of protection	in installation position: IP 54 to IEC/EN 60529
Ambient temperature	-10 °C ... +50 °C
Storage and shipping temperature	-10 °C ... +50 °C
LED display	lights up red on actuation
Actuating force	0.3 N ... 0.5 N (with vertical actuation; box weight min. 500 g)
Roller conveyor incline	-27° ... +90°
Voltage supply	integrated batteries
Battery life	approx. 10 years (depending on actuation frequency)
Wireless range	SW868/915/917: max. 450 m outside, max. 40 m inside SW922: max. 150 m outside, max. 20 m inside
Mechanical life	> 1 million operations
B _{10d} (10 % load)	2 million



Wireless tilting sensor for the detection of small parts containers

RF RW-NET

Material number: on request

Technical data

T_M	max. 10 years, depending on existing actuation frequency
Protocol	sWave.NET®
Frequency	868.3 MHz (Europe) or 915 MHz (USA, Canada and Mexico) or 917 MHz (Brazil) or 916.5 MHz (Japan)
Transmission power	< 25 mW; SW922: < 1 mW
ESD protection	optional
Shock resistance	16 g
Vibration resistance	5 g (10-150 Hz)
Wireless approvals	Europe: RED 2014/53/EU USA: FCC Part 15.247: XK5-RF Rx SW915 Canada: IC RSS-210: 5158A-RF Rx SW 915 Mexico: IFT - RCPSTRF17-1886 Brazil: ANATEL 04172-18-06718 Japan: ARIB STD-T108: 204-610002